



# Occupational Safety and Health in Thailand



**Ms. Sudthida Krungkrai Wong**

**Senior OSH Expert, TOSH Administrative Board**

**Thailand Institute of Occupational Safety and Health (Public Organization),**

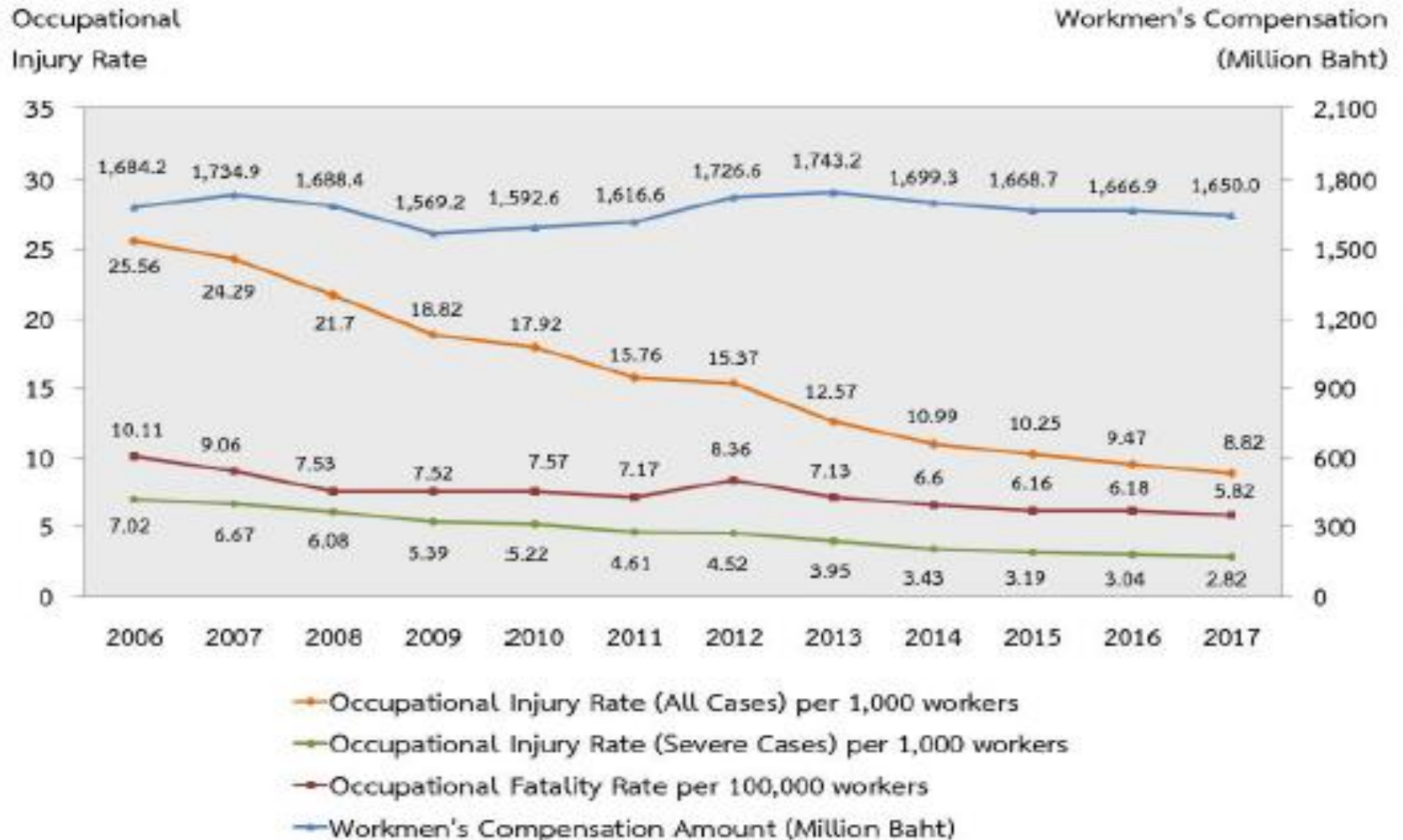
**Ministry of Labour**

# 1. Current OSH Situation & Occupational Injuries Statistics

- Total population (end of December 2017) = 66.17 million
- In agricultural sector = 11.38 million
- In non-agricultural sector = 25.69 million  
(manufacturing, construction, transportation, retail trade, service industry and other businesses)

<b>Occupational Accident &amp; Injuries in 2017</b>	<b>Cases</b>
Leave work $\leq$ 3 days	58,671
Leave work $>$ 3 days	25,820
Lost of organ	1,200
Disability	17
Death	570
<b>Total</b>	<b>86,278</b>

# Trend of Occupational Injury Rates by Severity and Workmen's Compensation, 2006 - 2017



## 2. National Policies and Master Plans on OSH

### 2.1 Government Policy:

National Agenda “Decent Safety and Health for Workers”  
Phase II (2017 – 2026)

### 2.2 OSH Master Plan

The 2<sup>nd</sup> National Master Plan on OSH (2017 – 2021)

Thai cabinet announced both National Agenda and  
OSH Master Plan on 14 December 2016

## 3. OSH Laws & Regulation

### 3.1 OSH Act B.E.2554 (A.D.2011)

Chapter 1: Duties of employer to provide safe & hygiene working conditions & environment

Chapter 2: Establishment provides OSH administration in accordance with OSH standards

Chapter 3: OSH committee

Chapter 4: Employer shall conduct hazards

Chapter 5: Safety Inspectors

Chapter 6: OSH Fund,

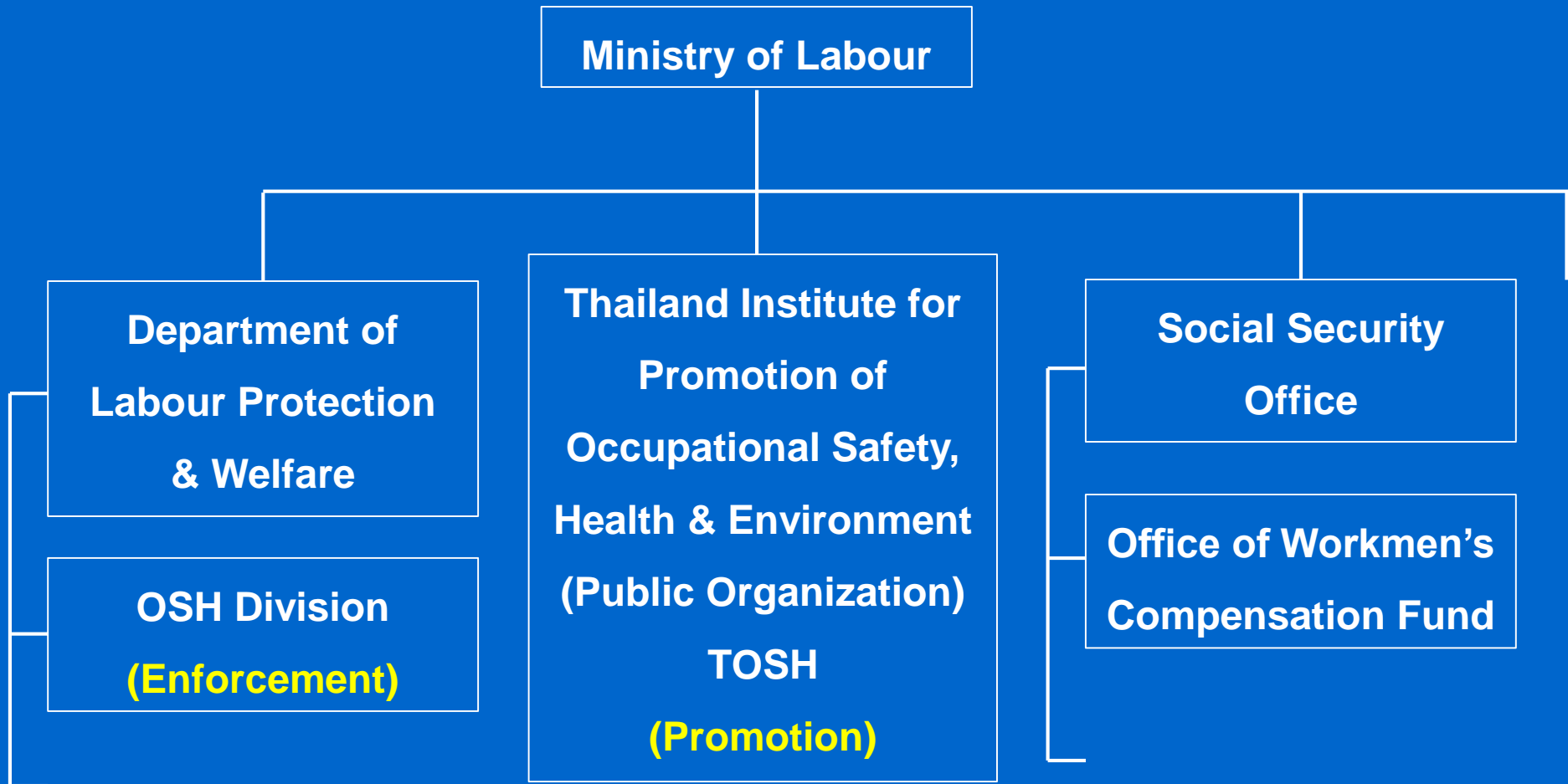
Chapter 7: Institute for the OSH Promotion

Chapter 8: Penalty who violates or falls to comply with the OSH laws

## Ministerial Regulation, Ministry of Labour :

1. Confined space
2. Ionizing radiation
3. Criteria & method of conducting health check-up of employees & forward the results of health check-up to labour inspectorate
4. Diving work
5. Administration & management of OSH  
(Safety Officers & OSH Department)
6. Construction work
7. Machinery, crane & boiler
8. Administration & management of OSH (No.2) (OSH MS)
9. Fire prevention & control
10. Training agencies on basic fire fighting, fire drills & evacuation
11. Hazardous chemicals
12. Electrical work
13. Heat, noise & light

## 4. Organizations Involve OSH in the Ministry of Labour





## 5. Examples of OSH Projects, Activities and Events

### 5.1 Ratification of the ILO Convention No. 187 “Promotional Framework for OSH, 2006”

### 5.2 “Safety Thailand” Project

26 July B.E. 2559 (A.D.2016) 6 Ministries:

1. Ministry of Agriculture and Cooperatives
2. Ministry of Industry
3. Ministry of Interior
4. Minister of Labour
5. Ministry of Public Health
6. Ministry of Transport



Later, Safety Thailand Project expanded its network of operations with other 4 Ministries and 4 organizations:

1. Ministry of Education
2. Ministry of Natural Resources and Environment
3. Ministry of Science and Technology
4. Ministry of Tourism and Sports
5. Industrial Estate Authority of Thailand
6. The Federation of Thai Industries
7. The Thai Chamber of Commerce
8. The Engineering Institute of Thailand

### 5.3 World Day on Safety and Health at Work

ILO declared April 28th of each year as the World Day for Safety and Health at Work

### 5.4 National Safety at Work Memorial Day

To recall the worst industrial fire accident that occurred on 10 May 1993 at Kader Toy Factory that resulted in 188 fatalities & more than 400 severe injuries

### 5.5 National Safety Week

National Safety Week → Thailand Safety @ Work : seminars + exhibition + campaign + ... organize annually

- 1<sup>st</sup> ... 1 – 3 June 1986
- 32<sup>nd</sup> ... 28 – 30 June 2018
- 33<sup>rd</sup> ... 4 – 6 July 2019



## 5.6 Zero Accident Campaign

### Consideration Criteria



Awards Level	Accumulate Working Hour Without Accident
Certificate	Less than 1,000,000 Hours and Accumulate Working Hour Not Less than 12 Months
Copper	1,000,000– 2,000,000 Hours
Silver	3,000,000 – 9,999,999 Hours
Gold	From 10,000,000 Hours
Platinum	Received Gold Level 5 Years Continuously

## Number of Enterprises that Received Awards 2014 - 2018

Reward Level	2014	2015	2016	2017	2018	Total
Certificate	165	207	144	158	280	964
Copper	135	133	103	120	193	684
Silver	84	91	83	90	115	463
Gold	38	38	34	40	55	205
Platinum	--	--	7	9	14	30
<b>Total</b>	<b>422</b>	<b>469</b>	<b>371</b>	<b>417</b>	<b>657</b>	<b>2,336</b>

## 5.7 OSH Standards

### **Type 1: Standards that Promote Enforcement of OSH Laws**

1. OSH Management System Standard
2. OSH Risk Assessment Standard
3. Safety Management on Working at Height Standard

### **Type 2: Recommended Standards**

1. Ergonomics Standard on Working with Computer
2. Ergonomics Standard on Manual Materials Handling

# Example

## OSH Management System Standard



## OSH Risk Assessment Standard



# Ministerial Regulation Prescribing the Standard for Administration and Management of Occupational Safety, Health and Environment (No. 2) B.E. 2553 (A.D.2010)

Clause 22/2 Enterprises having 50 employees or more, employers shall provide **OSH Management Systems** in the workplace which at least composed of:

1. OSH Policy
2. OSH Organizing
3. OSH Planning and Implementation
4. Evaluation and Review of OSH Management Systems
5. Action for OSH Improvement



Requirements	Basic	Silver	Gold	Platinum
<b>1. OSH Policy</b>	✓	✓	✓	✓
<b>2. OSH Organizing</b>				
2.1 Written OSH administration organization ....	✓	✓	✓	✓
2.2 Appoint employee in management level to be OSH management representative		✓	✓	✓
<b>3. OSH Planning and Implementation</b>				
3.1 Hazard identification and risk assessment	✓	✓	✓	✓
3.4 Competency & Training (1) .....			✓	✓
<b>4. Evaluation and Review of OSH Management Systems</b>				
4.1 .....	✓	✓	✓	✓
<b>5. Action for OSH Improvement</b>				
5.1 .....				

## Pilot Project on OSH Management Systems for SMEs

Level	2016 (10 SMEs)	2017 (53 SMEs)
Platinum	8 SMEs	22 SMEs
Gold	--	5 --
Silver	--	3 --
Basic	1 SME	16 SMEs
Total	9 SMEs	46 SMEs

<b>Occupational Injuries &amp; Errors in the Production Process are Interrupted</b>	<b>2016</b>	<b>2017</b>
<b>Sick Leave</b>	234 Days	179 Days
<b>Death</b>	1 Case	0 Case
<b>Loss of Organ</b>	5 Cases	2 Cases
<b>Injury with absent</b>	6 Cases	5 Cases
<b>Injury without absent</b>	8 Cases	2 Cases
<b>Errors in the Production Process are Interrupted</b>	20 Times	12 Times

**Thank You Very Much  
Sawasdee Ka**

